

# TAN07 MEGApod 7' Aluminum Tripod

## Design Specifications

Adjustable Height: 49.21" (1.25 m) - 88.18" (2.24 m)

Distance Between Legs:

At minimum tripod height: 47.63" (1.21 m)

At maximum tripod height: 78.74" (2 m)

Height adjustment achieved by sliding telescopic legs

Includes two eyebolts for personal protective equipment attachment

Two pulley system provided to pass the wire rope of winch mounted on one leg and retrieval block on the other leg simultaneously

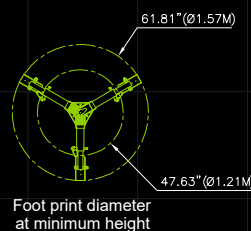
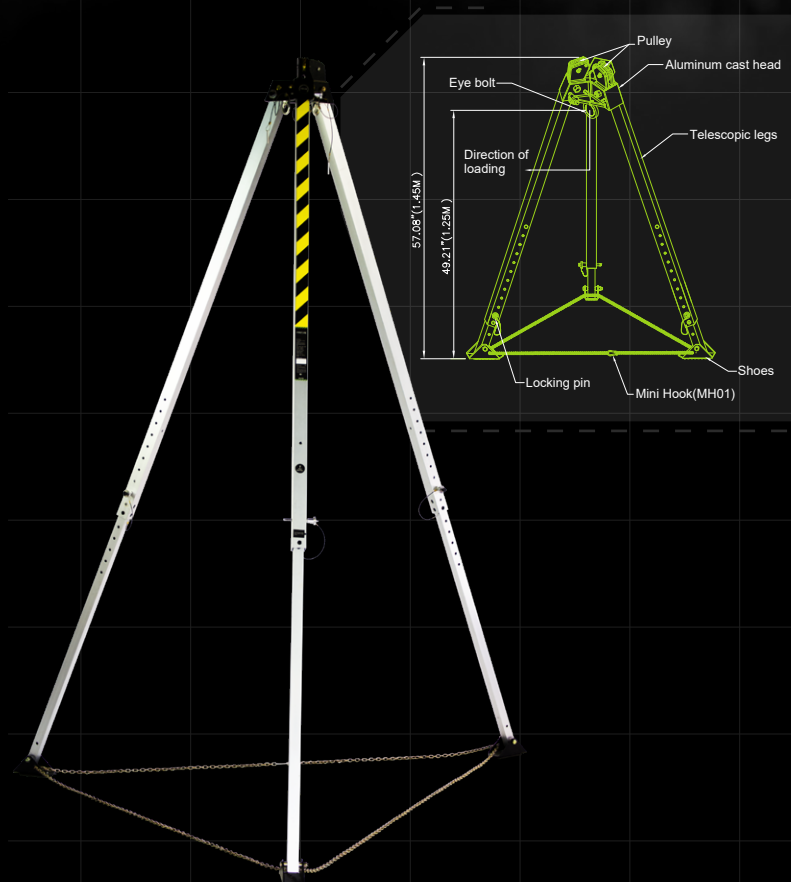
Includes mounting brackets for winch and retrieval system installation

## Material Specifications

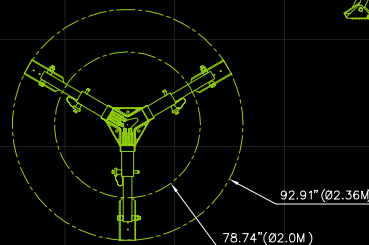
Tripod Material	Prime Quality Aluminum Alloy
Tripod Legs Finish	Anodized
Tripod Head Finish	Powder Coated
Locking Pins Finish	Polished
Locking Pins Material	Stainless Steel
Load Capacity	310 lbs.
Weight	42 lbs.

## Relevant Standards

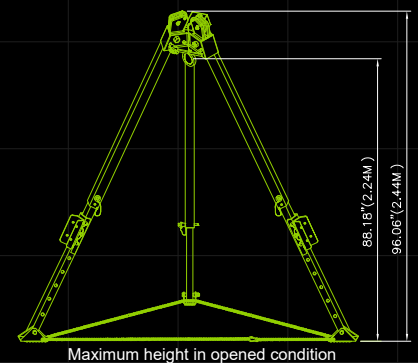
OSHA	1926
	1910
ANSI	Z359.1-2007
EN	795:2012 Type B



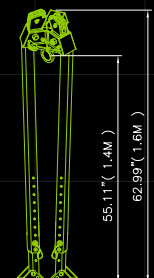
Foot print diameter at minimum height



Foot print diameter at maximum height



Maximum height in opened condition



Height in closed condition

### WARNINGS:

• Do not skip user instructions supplied with this product.  
• Alteration or misuse of this product or failure to follow instructions may lead to serious injury or even death.



# SPEC SHEET

## RUG60 60' Winch With Galvanized Steel Cable and Swivel Snap Hook

### Design Specifications

Comes with universal mounting bracket assembly that installs onto MEGApod easily and quickly

Material or man lifting rescue winch

Equipped with swivel steel snap hook as connector

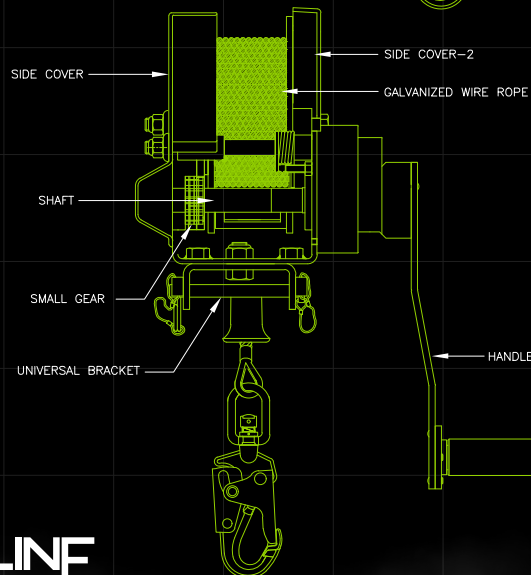
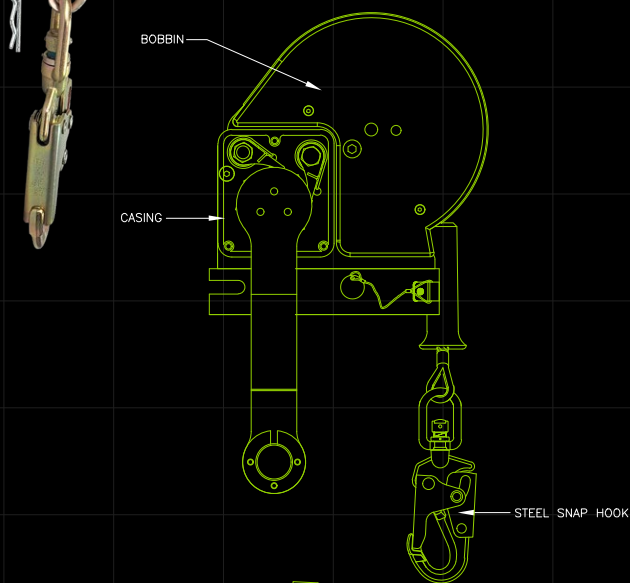
Handle rotating mechanism for lifting or lowering

### Material Specifications

Cable	Galvanized steel wire rope
Cable Length	60'
Cable Diameter	3/16"
Body Material	Galvanized Steel
Rated Load Capacity	310 lbs.
Weight	26 lbs.

### Relevant Standards

ANSI	Z359.4-2013
OSHA	CFR 1926
	CFR 1910



#### WARNINGS:

• Do not skip user instructions supplied with this product.  
• Alteration or misuse of this product or failure to follow instructions may lead to serious injury or even death.

**FRONTLINE**  
FALL PROTECTION

info@frontlinefall.com

www.frontlinefall.com  
© 2019

2023 NW 84th Ave, Miami FL, 33122

# RPG603W 60' 3-Way Self Retractable Lifeline with Retrieval System

## Design Specifications

Retrieval fall arrester block in polymer casing coupled with hoisting winch to enable easy retrieval of victim

The locking pin on the side of the casing at the base of the handle allows this dual system to work in independent fall arrest & winch mode

Can be easily mounted on the leg of the MEGApod system with specialized bracket (TACBU)

## Physical Parameters

Has swivel anchorage eye at anchorage end

Swivel steel snap hook with load Indicator at attachment end

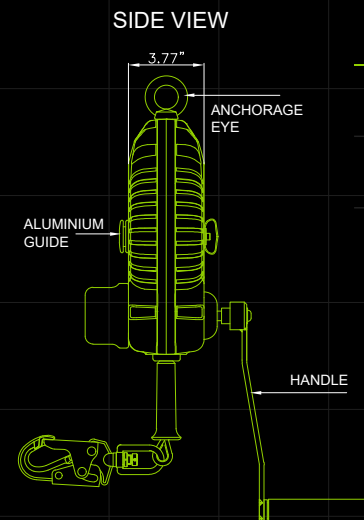
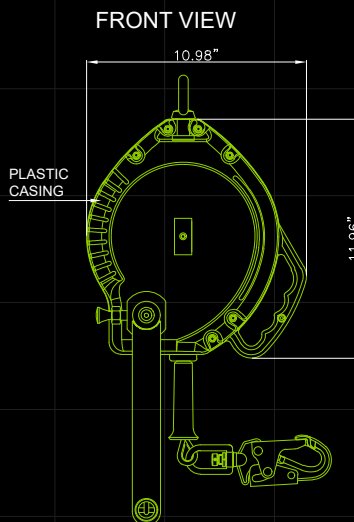
Robust & durable plastic casing

## Material Specifications

Cable	Galvanized steel wire rope
Cable Length	60'
Cable Diameter	3/16"
Min. Breaking Strength	3400 lbs
Weight	20.3 lbs

## Relevant Standards

ANSI	Z359.14-2014
OSHA	CFR 1926
	CFR 1910



### WARNINGS:

- Do not skip user instructions supplied with this product.
- Alteration or misuse of this product or failure to follow instructions may lead to serious injury or even death.

**FRONTLINE**  
FALL PROTECTION